

PLACEit



Modular Homes

PLACEit

Find your place

● Contents

PLACEit Story	4
Sustainability	6
Backyard Pod	8
Custom Design	10
Process	12
PLACEit Classic Range	15
PLACEit Elevate Range	35

Prices listed are valid as of April 2024 and a subject to change without notice.

At PLACEit, We're Building More Than Homes – We're Building Futures

We share our journey, our passion, and our commitment to creating innovative, sustainable, and affordable housing solutions. Our story is a testament to our unwavering dedication to making the dream of homeownership a reality for you.

PLACEit was born out of a shared vision – to revolutionise the housing industry by providing homes that are fast, affordable, and environmentally friendly. Our journey began over 20 years ago when we started by supplying prebuilt, demountable, and kit homes for disaster relief and charitable organisations in Australia and around the globe.

From Humble Beginnings

Our roots are deeply embedded in a humble mission – to provide shelter and hope to those in need during times of crisis. We witnessed firsthand the profound impact that providing quality homes can have on people's lives. This experience ignited a spark in us, propelling us to expand our horizons and innovate within the housing sector.

A Global Reach

Our dedication to building not just homes, but brighter futures, has taken us to various corners of the world. We've provided homes in the aftermath of natural disasters, served communities in need, and helped shape better living spaces for countless families. The knowledge and experience gained from these diverse projects have been invaluable in shaping the PLACEit you see today.

A Journey of Growth

From our early beginnings, we have evolved and adapted to meet the ever-changing needs of the housing market. Our commitment to delivering homes that make a difference has been unwavering. With each project, we've grown, continuously refining our craft to provide even better solutions.

The PLACEit Difference

Our team is driven by a shared passion for designing homes that seamlessly blend functionality, style, and budget. We understand that your home is a reflection of your lifestyle and aspirations. That's why we work tirelessly to ensure that your PLACEit home is the perfect fit for you.

At the core of every PLACEit home is the Durra Panel difference. We are proud to present an innovative and environmentally friendly solution that sets our homes apart. Instead of traditional building materials, PLACEit homes are lined with Durra Panel, a compressed straw panel made entirely from reclaimed waste straw. This sustainable material not only enhances the integrity of your home but also ensures a healthier living space.

Durra Panel offers numerous benefits, including exceptionally low VOCs, acoustics, thermal efficiency, and fire resistance, all within a single, eco-friendly product. When you choose a PLACEit home, you're not only selecting a home; you're choosing a sustainable lifestyle.

Find Your Place with PLACEit

Whether you're in search of your dream home, an additional dwelling, or an outdoor studio, PLACEit is here to help you find your place. We're committed to providing you with a living space that reflects your style, suits your site, and respects your budget.

At PLACEit, we don't just build homes; we build futures. We believe that every structure we create is an opportunity to change lives, make a positive impact on the environment, and shape a better tomorrow. Join us on this remarkable journey, and let us help you find your perfect place.

Durra Panel

PLACEit Homes elegantly combines sustainability and innovation in modular building! We take pride in setting ourselves apart from other modular home by using Durra Panel for our internal walls and ceilings. Durra Panel isn't just any building material; it's a game-changer in sustainable construction.

Embracing Sustainability

At PLACEit, we're committed to reducing our ecological footprint, and Durra Panel plays a crucial role in achieving this goal.

This remarkable material is crafted from a greatly wasted resource: straw. The raw straw used in manufacturing is a natural by-product of annual wheat harvesting and is locally sourced from rural Victoria. Durra Panel is produced at our Bendigo facility through a unique manufacturing process using only heat and pressure, allowing the straw to self-bind and form a compressed core that is 100% straw. As a result, Durra Panel boasts an incredibly low embodied energy and is 99.9% free from Volatile Organic Compounds (VOCs). This creates a healthier living environment in your PLACEit home.

Efficiency Meets Quality

When you choose Durra Panel, you're not only making an eco-conscious decision but also a practical one. Its simplicity of installation eliminates the need for multiple specialty tradespeople, reducing both build times and resource consumption compared to traditional construction methods.

Additionally, Durra Panel offers exceptional thermal, acoustic, and fire-resistant properties sustainably provided in a single product. The added benefits of a long life span, durability and low maintenance ensure that your Durra Panel lined home can serve you for over 60 years.

Modular Process

Sustainability at its Core

As PLACEit Homes are constructed off-site in a controlled environment at our manufacturing facility, we offer faster build times and produce significantly less waste. Furthermore, this approach reduces travel emissions, as materials like Durra Panel and Durra Steel Sections are made on-site. Not only is this sustainable, but it's also great for your budget.

Building off-site also means there is less impact on the site of your home that may be caused during construction. This impact is minimised as we only work on-site when necessary for site preparation and home installation.

High-Quality Materials

At PLACEit, we aim to use high-quality materials within our builds, extending the lifetime of our modular homes and reducing the need for materials to be replaced.

Steel Frames for Durability

We choose to use steel frames as our standard for construction, believing they provide the most durable option for our homes. Steel frames are not only strong and long-lasting but are also fully recyclable, contributing to a sustainable future.

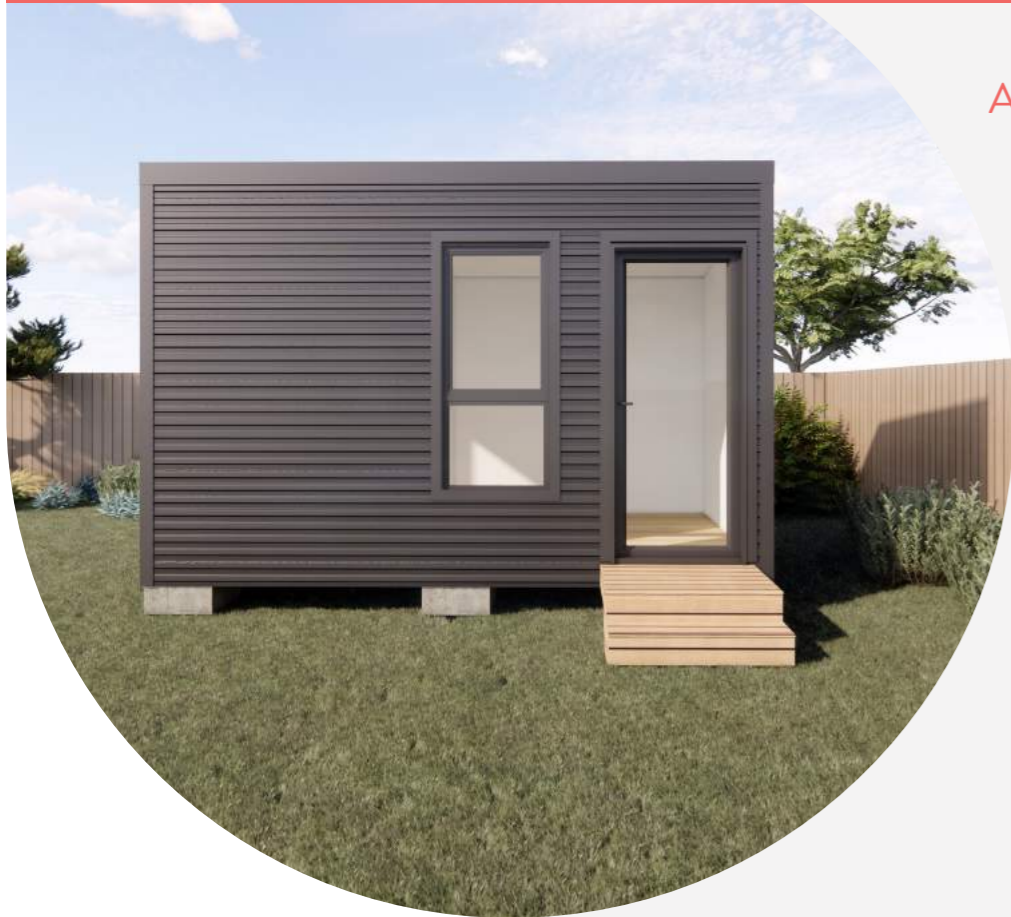
Energy Efficiency

We use double-glazed windows as standard and aim to achieve a high level of energy performance. This results in our homes having reduced heating and cooling needs, ensuring a comfortable living environment while minimising energy consumption and costs.

With Durra Panel and our modular approach, we're not just building homes; we're building a sustainable future.

Explore the sustainable possibilities with Durra Panel and let PLACEit help you find your place.

Backyard Pod



A tranquil space perfect for your backyard!

9.1m² studio

Simplified construction for a competent DIYer.

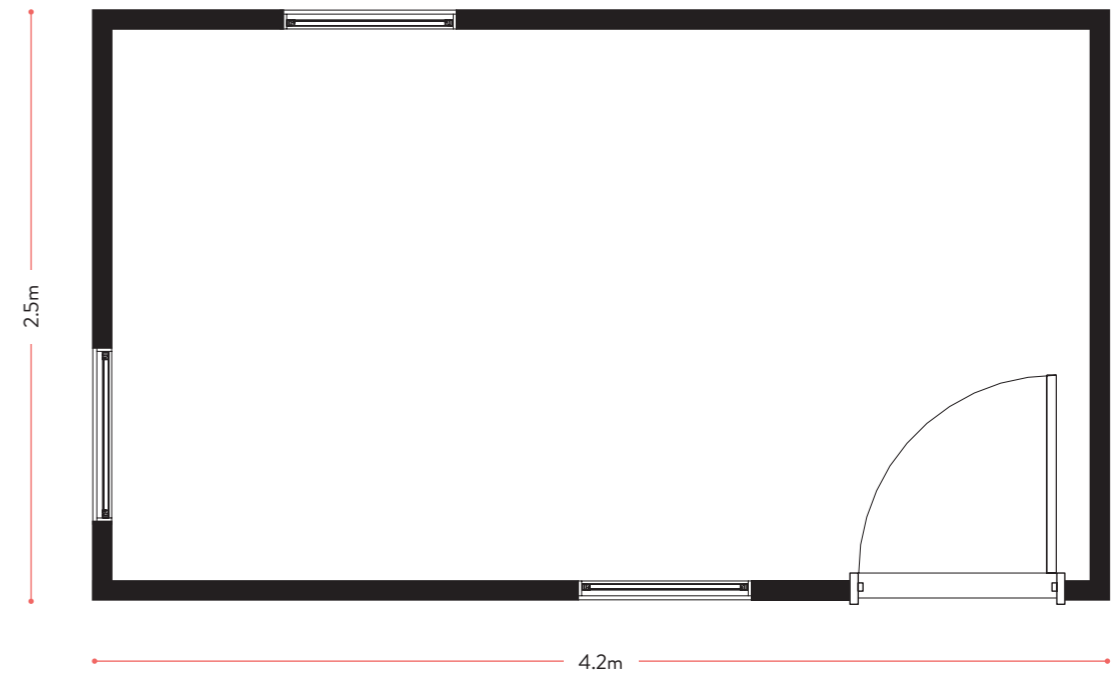
This pod is less than 10m² and may receive an exemption from planning and building permits. Ask us for more information.

<10 square metres

• Find your place

Backyard Pod Floor Plan

Nominal dimensions shown
Loose furniture not included



Backyard Pod Kit from \$21,000*

Documentation

Backyard Pod Assembly Guide

Floor System

Concrete Blocks
Timber Bearers and Joists
Yellowtongue flooring

Wall System

S50 Durra Panels - Natural Finish
Aluminium Double-Glazed Windows/Door
Vapour Permeable Wall Wrap
Thermal Break Strips
Steel Wall Frame Members
Colorbond Cladding - Corrugated Profile
Wall Flashings

Roof System

Durra Panels for Ceiling
Durra Duplex Ceiling Beams
Timber Roof Battens
Roof Sarking
Colorbond Roofing - Corrugated Profile
Roof flashings

Internal Finishes

Skirtings and Architraves
Painting - Durra Panels and Exposed Steel Framing Members

Other

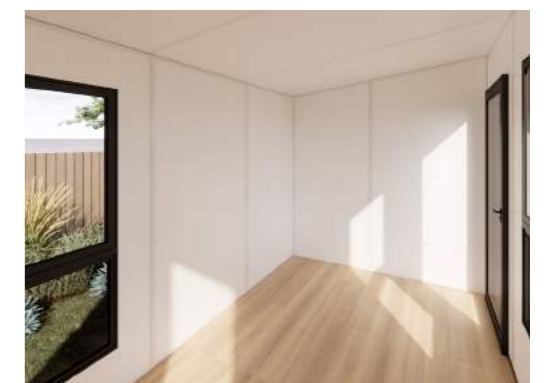
Fixings and Hardware

Exclusions

Construction
Entry Stairs
Permits
Transport

Optional Extras

Floor Covering
R1.3 Anticon Roof Blanket
Construction of Backyard Pod



* Standard finishes price. All prices quoted are GST inclusive and exclude external consultants, permit fees, delivery to site and site works. Ortech Industries reserve the right to make modifications to the plans, specifications, and dimensions if so required.

Custom Homes by PLACEit

At PLACEit, we understand that your home is a reflection of your unique style and needs. If you're looking for a more personalised living space, our dedicated design team is here to turn your vision into reality.

Tailored Design Process

We begin by listening carefully to your requirements, preferences, and ideas. Our expert designers work closely with you to create a customised design that suits your lifestyle and your site.

Visualise Your Dream

We provide you with detailed concept drawings and stunning 3D images of your future home. This allows you to visualise the layout and ambience, ensuring it matches your expectations.

Affordable Design Fee

To cover the design process, we charge a nominal design fee. This investment ensures that your home is uniquely crafted to your specifications.

Seamless Modular Construction

Once you approve the design and receive a quote, your custom-built home will benefit from the same modular advantages as our pre-designed homes. This means efficient, high-quality construction that meets your timeline and budget.

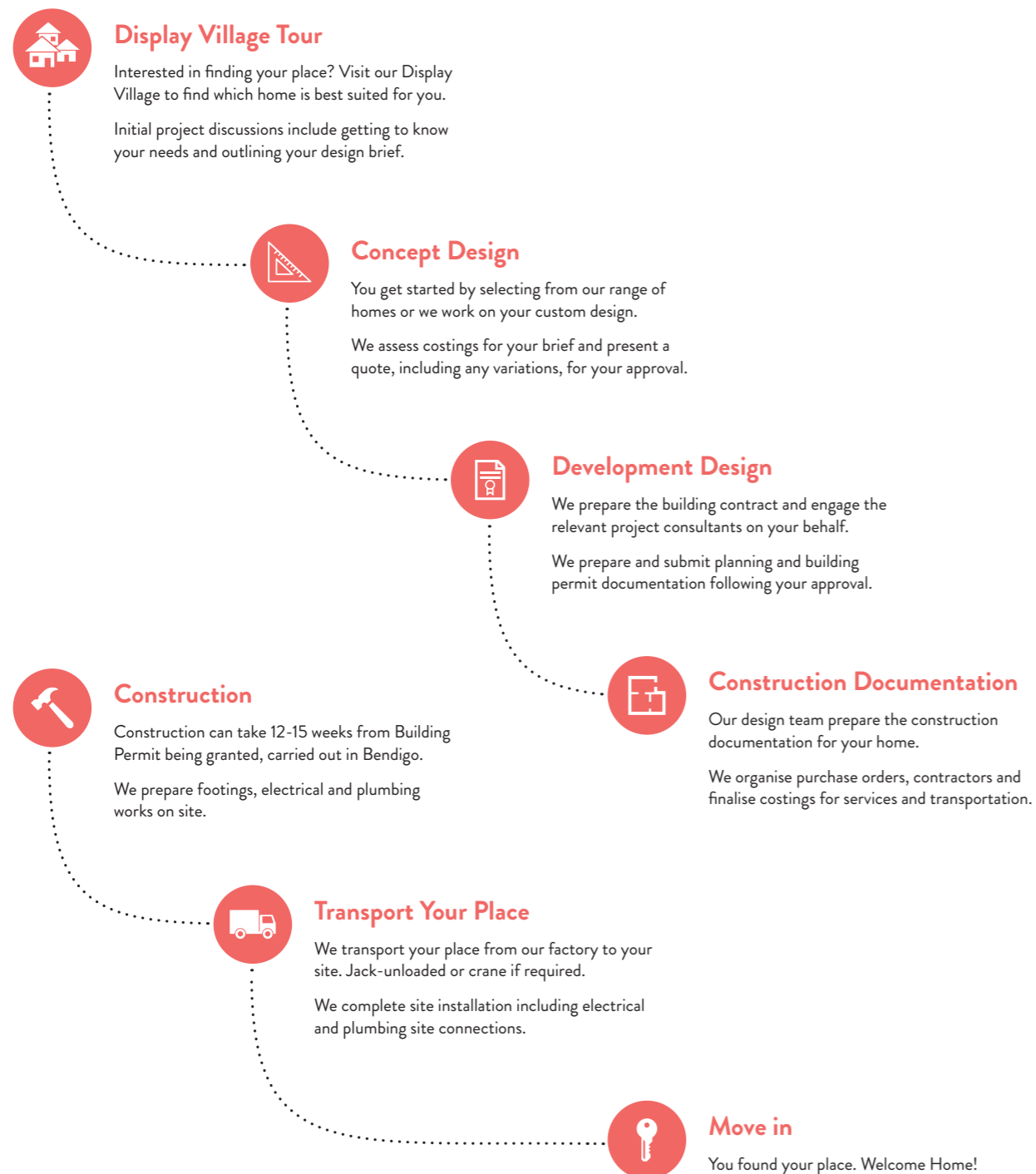
• Find your place



PLACEit Process

Assembled Modular Home Process

Begin the journey to finding your place with an initial visit to the Display Village located in Bendigo. Continue with a completely collaborative and supported journey with the PLACEit team. Our highly talented team will work collaboratively and support you through each step towards your new home, from you choosing the initial design through to the day you move in!



PLACEit Classic Range

Our Torquay and Coolum Modular homes have been built for decades. These classic designs have gracefully evolved over the years, blending tradition with modern living.

PLACEit Classic Range Inclusions

• Find your place

Assembled Modular Home Inclusions

Standard inclusions listed below apply to the PLACEit Classic Range and are included within the listed prices. Optional add ons listed for each home are pre priced and can be added to the listed price. Further changes or additions can be accommodated and are priced on application, feel free to discuss any custom designs with the PLACEit team.

Project Management

- Concept Design Meeting
- Contract Documentation
- Basic Planning Permit Set subject to site requirements and overlays
- Building Permit Drawings Set
- Construction Drawings Set

Structure & Design

- Structural steel frame to floors, walls, and ceilings
- Durra Ceiling System
- Uni piers in concrete footings
- Construction to bushfire rating BAL 12.5

Kitchen Package

- Base cabinets with soft close cabinet doors
- Pantry
- Fridge space
- Laminate benchtop
- Tiled splashback
- Oven, electric cooktop, canopy rangehood, sink with drainer

Bathroom Package

- 900 x 900mm stepless shower
- 750mm vanity (Torquay homes)
- 900mm vanity (Coolum homes)
- Tiled floor, skirting, shower walls, splashback
- Toilet
- Towel rail, toilet roll holder, polished edge mirror

Laundry Package

- Washing machine taps
- Laundry trough
- Tiled splashback

Electrical Package

- LED Downlights
- Double GPOs
- External sensor light at entry door
- 190mm wall-mount bathroom exhaust fan
- Hardwired smoke alarms
- Internal switchboard
- Wiring for HWU and kitchen appliances

Exterior / Interior Finishes

- Colorbond roofing
- Colorbond wall cladding
- Durra Panel walls and ceilings
- Low VOC paint throughout (Dulux EnvirO₂)
- Raked ceilings throughout

Floor Coverings

- Hybrid in kitchen and living areas
- Carpet in bedrooms
- Tiles in bathroom and laundry rooms
- Euro laundry to match adjacent flooring

Energy

- Bulk insulation to ceiling, floor and walls
- Blanket insulation in roof
- Double glazing to all windows and sliding doors
- Aluminium frames

Optional Upgrades

- Dishwasher (Coolums homes)
- Push to open cabinetry
- Overhead cupboards to kitchen
- Split System Heating and Cooling

Assembled Modular Home Exclusions

Some aspects are site specific and costing will depend on your specific conditions and requirements.

Exclusions

Transport and placement on site

Preliminary

- Soil test and wind report
- Site survey
- NatHERS energy assessment
- Bushfire assessment (if required)

Service Connections

- Sewer/Septic connection to site
- Electricity connection to site
- Plumbing connection to site
- Hot water unit

Energy Assessment and Bushfire Upgrades

- Any upgrades required as a result of the NatHERS energy assessment or bushfire consultant's report will be priced separately

Authorities and Engineering

- Planning Permit and Building Permit application fees
- Module and footings engineering

Interior

- Window furnishings

Exterior

- Landscaping
- Driveway

PLACEit Classic Range Inclusions

• Find your place

Kit Home Inclusions

Documentation

- Shop drawings and Kit Home assembly drawings
- Structural engineering documentation (module only, excludes footings)

Structure and Design

- Structural steel frame to floors, walls, and ceilings
- Durra Ceiling System
- Hardware: Brackets, fasteners, adhesives, nails, sealant

Exterior / Interior Finishes

- Colorbond roofing
- Colorbond wall cladding
- Colorbond flashings, gutters and downpipes
- Durra Panel walls and ceilings
- Raked ceilings throughout
- MDF Cornice, skirting and architraves

Doors and Windows

- Aluminium windows and sliding doors with flyscreens
- Hume 870mm solid core flush entrance door and timber entry frame
- Brushed satin chrome entrance handle set
- Diamond grille security door and closer
- Hume 870mm flush internal doors and timber jambs
- Brushed satin chrome passage sets

Energy

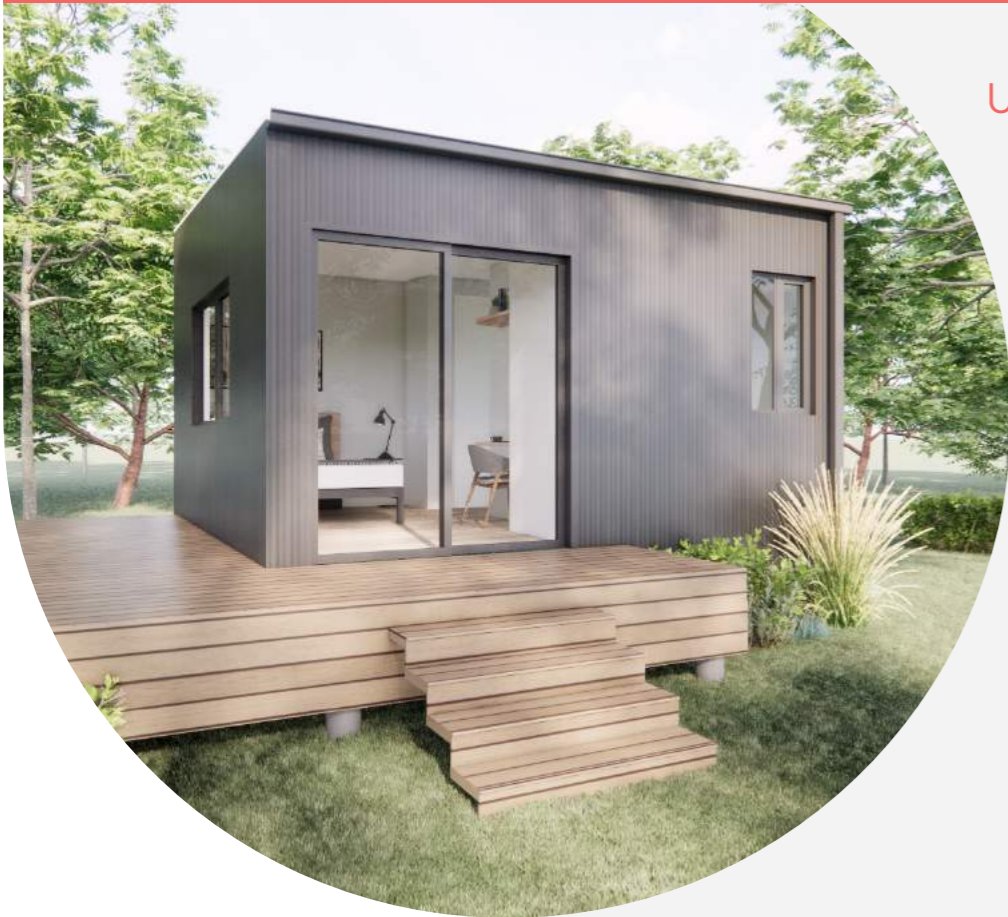
- Bulk insulation for ceiling, floor and walls
- Blanket insulation in roof
- Double glazing to all windows and sliding doors

Kit Home Exclusions

Exclusions

- Transport of Kit Home – to be priced separately based on location
- On site construction works
- Footings and associated geotechnical/ structural engineering consultancy
- Floor coverings
- Joinery
- Loose furniture
- Electrical works, including air conditioners
- Plumbing works
- Sanitaryware and plumbing fixtures and fittings
- Painting
- Entry steps or ramps
- Energy assessment and associated upgrades required to meet energy assessment requirements
- Bushfire assessment and associated bushfire rating upgrades
- Council application fees
- Building Surveyor Consultancy and Planning Permit and Building Permit fees

Torquay 4



Utilise the flexible open area for work, sleep or play!

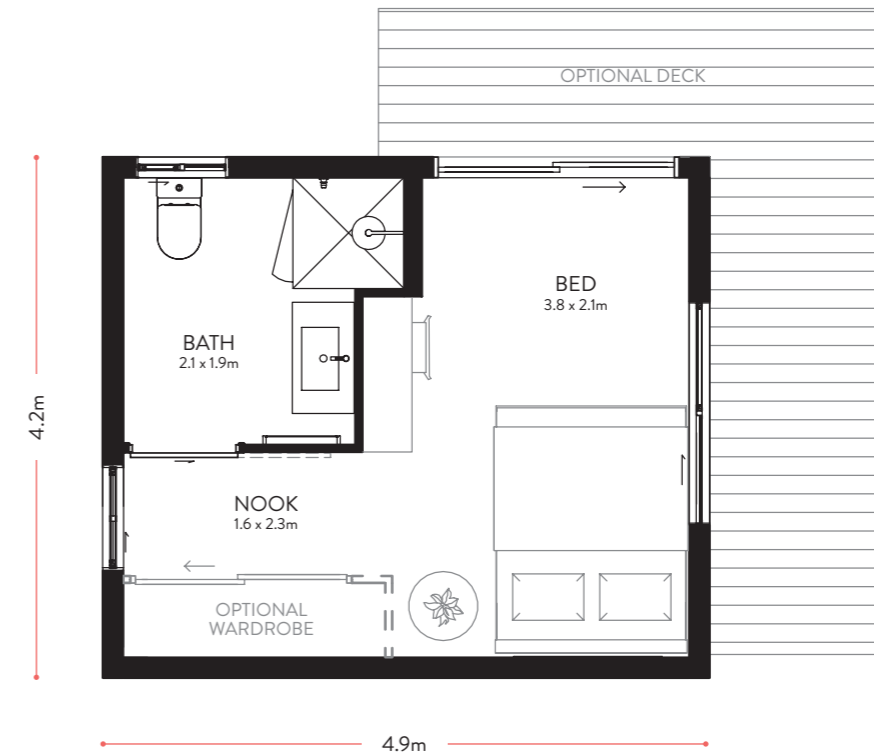
17.5m² studio

- 1 bedroom
- 1 bathroom

• Find your place

Torquay 4 Floor Plan

Nominal dimensions shown
Loose furniture not included



Torquay 4 Modular Home from \$130,110*

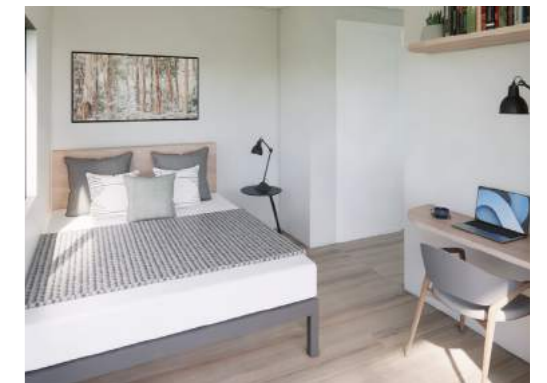
- | | |
|------------------------|-----------------|
| Project Management | Fully Assembled |
| Durra Panel | Floor Coverings |
| Bathroom Package | Double Glazing |
| Electrical Package | Painting |
| Insulated Floor System | |

Torquay 4 Kit Home from \$53,350*

Inclusions listed on page 17

Optional Add Ons

- | | |
|---------------------|--------|
| • Built in wardrobe | \$1400 |
| • Deck | POA |
| • Upgraded cladding | POA |



* Standard finishes price. All prices quoted are GST inclusive and exclude external consultants, permit fees, delivery to site and site works. Ortech Industries reserve the right to make modifications to the plans, specifications, and dimensions if so required.

Torquay 5



A sunlit studio, maximising natural light for a cosy ambiance!

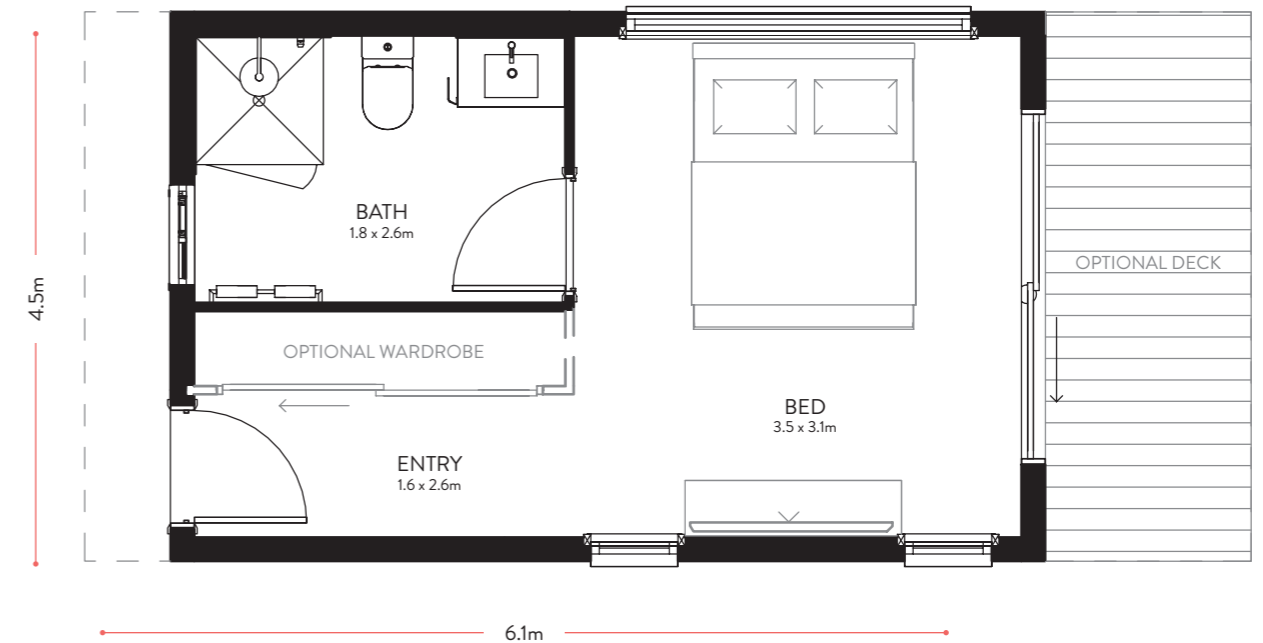
20m² studio

- 1 bedroom
- 1 bathroom

• Find your place

Torquay 5 Floor Plan

Nominal dimensions shown
Loose furniture not included



Torquay 5 Modular Home from \$141,490*

- | | |
|------------------------|-----------------|
| Project Management | Fully Assembled |
| Durra Panel | Floor Coverings |
| Bathroom Package | Double Glazing |
| Electrical Package | Painting |
| Insulated Floor System | |

Torquay 5 Kit Home from \$56,595*

Inclusions listed on page 17

Optional Add Ons

- | | |
|---------------------|--------|
| • Built in wardrobe | \$1900 |
| • Deck | POA |
| • Veranda | POA |
| • Upgraded cladding | POA |



* Standard finishes price. All prices quoted are GST inclusive and exclude external consultants, permit fees, delivery to site and site works. Ortech Industries reserve the right to make modifications to the plans, specifications, and dimensions if so required.

Torquay 6



A compact yet spacious retreat featuring a thoughtful layout!

24.8m² studio

- 1 bedroom
- 1 bathroom
- Kitchenette
- Lounge

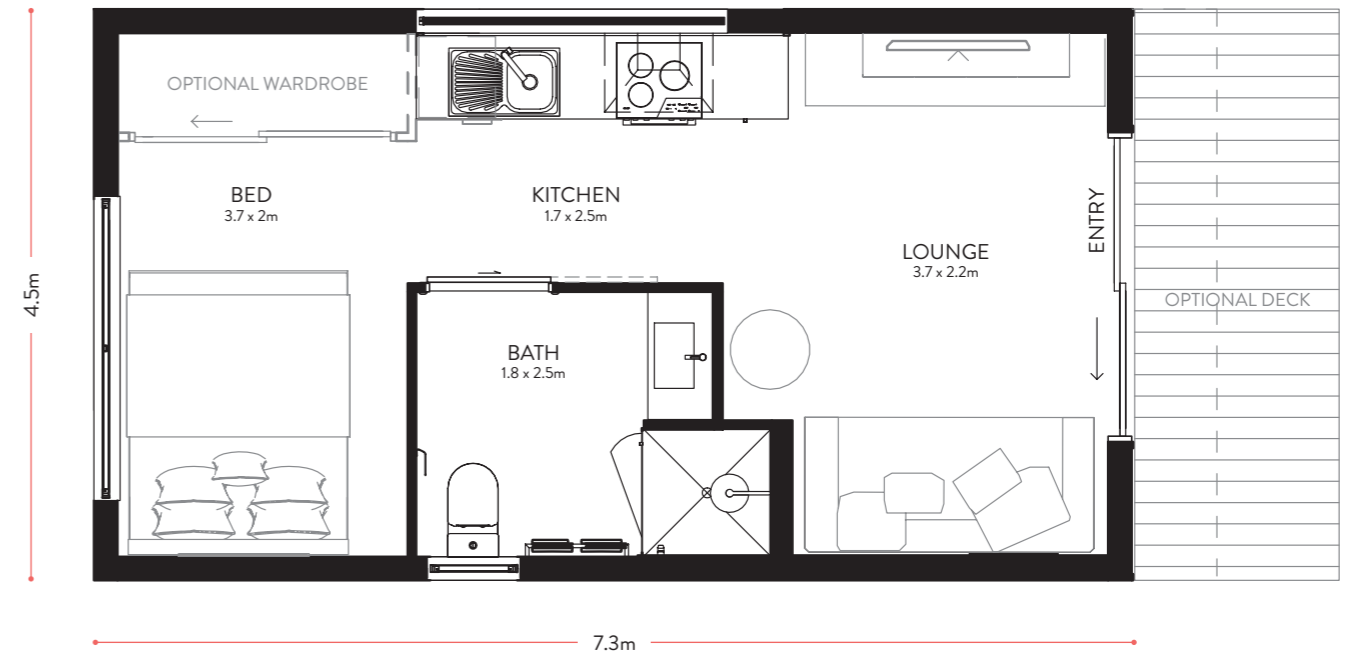
This home is less than 60m² and may receive a planning permit exemption as per the Victorian Government regulations for a secondary dwelling.

<60 square metres

• Find your place

Torquay 6 Floor Plan

Nominal dimensions shown
Loose furniture not included



Torquay 6 Modular Home from \$161,670*

- | | |
|------------------------|-----------------|
| Project Management | Fully Assembled |
| Durra Panel | Floor Coverings |
| Bathroom Package | Kitchen Package |
| Electrical Package | Double Glazing |
| Insulated Floor System | Painting |

Torquay 6 Kit Home from \$61,435*

Inclusions listed on page 17

Optional Add Ons

- | | |
|---------------------|--------|
| • Built in wardrobe | \$1500 |
| • Deck | POA |
| • Veranda | POA |
| • Upgraded cladding | POA |



* Standard finishes price. All prices quoted are GST inclusive and exclude external consultants, permit fees, delivery to site and site works. Ortech Industries reserve the right to make modifications to the plans, specifications, and dimensions if so required.

Coolum 8



Compact living, your city or countryside retreat awaits!

48m² studio

- 1 Bedroom
- 1 Bathroom
- Kitchen
- Lounge
- Euro Laundry

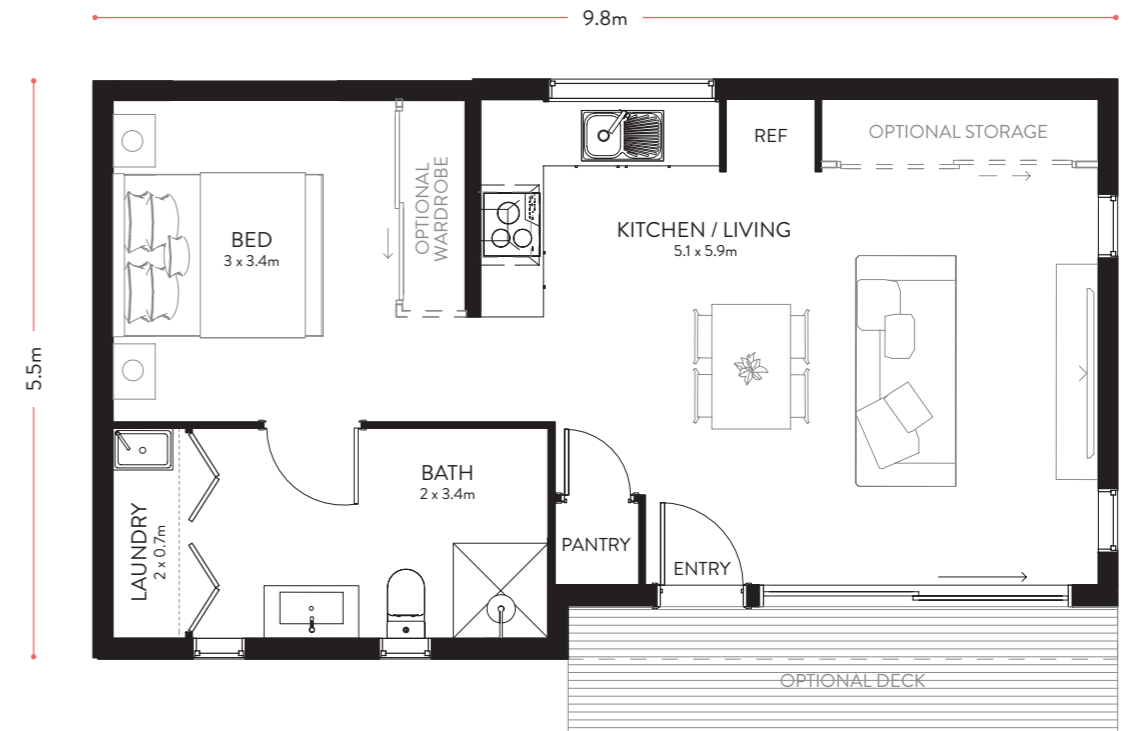
This home is less than 60m² and may receive a planning permit exemption as per the Victorian Government regulations for a secondary dwelling.

<60 square metres

• Find your place

Coolum 8 Floor Plan

Nominal dimensions shown
Loose furniture not included



Coolum 8 Modular Home

from **\$214,900***

- | | |
|------------------------|-----------------|
| Project Management | Fully Assembled |
| Durra Panel | Floor Coverings |
| Bathroom Package | Kitchen Package |
| Laundry Package | Double Glazing |
| Electrical Package | Painting |
| Insulated Floor System | |

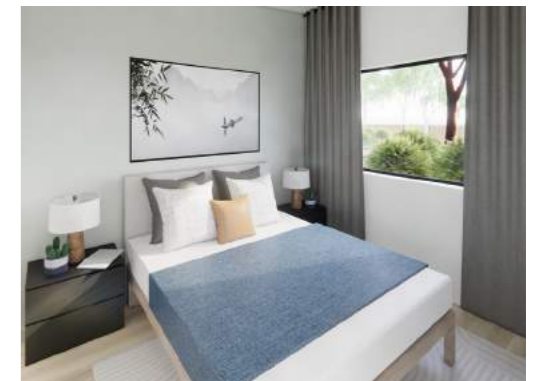
Coolum 8 Kit Home

from **\$83,800***

Inclusions listed on page 17

Optional Add Ons

- | | |
|---------------------|--------|
| • Built in wardrobe | \$1400 |
| • Built in storage | \$2455 |
| • Deck | POA |
| • Upgraded cladding | POA |



* Standard finishes price. All prices quoted are GST inclusive and exclude external consultants, permit fees, delivery to site and site works. Ortech Industries reserve the right to make modifications to the plans, specifications, and dimensions if so required.

Coolum 10



Experience the perfect balance of space and comfort!

55.5m² studio

- 2 Bedrooms
- 1 Bathroom
- Kitchen
- Lounge
- Euro Laundry

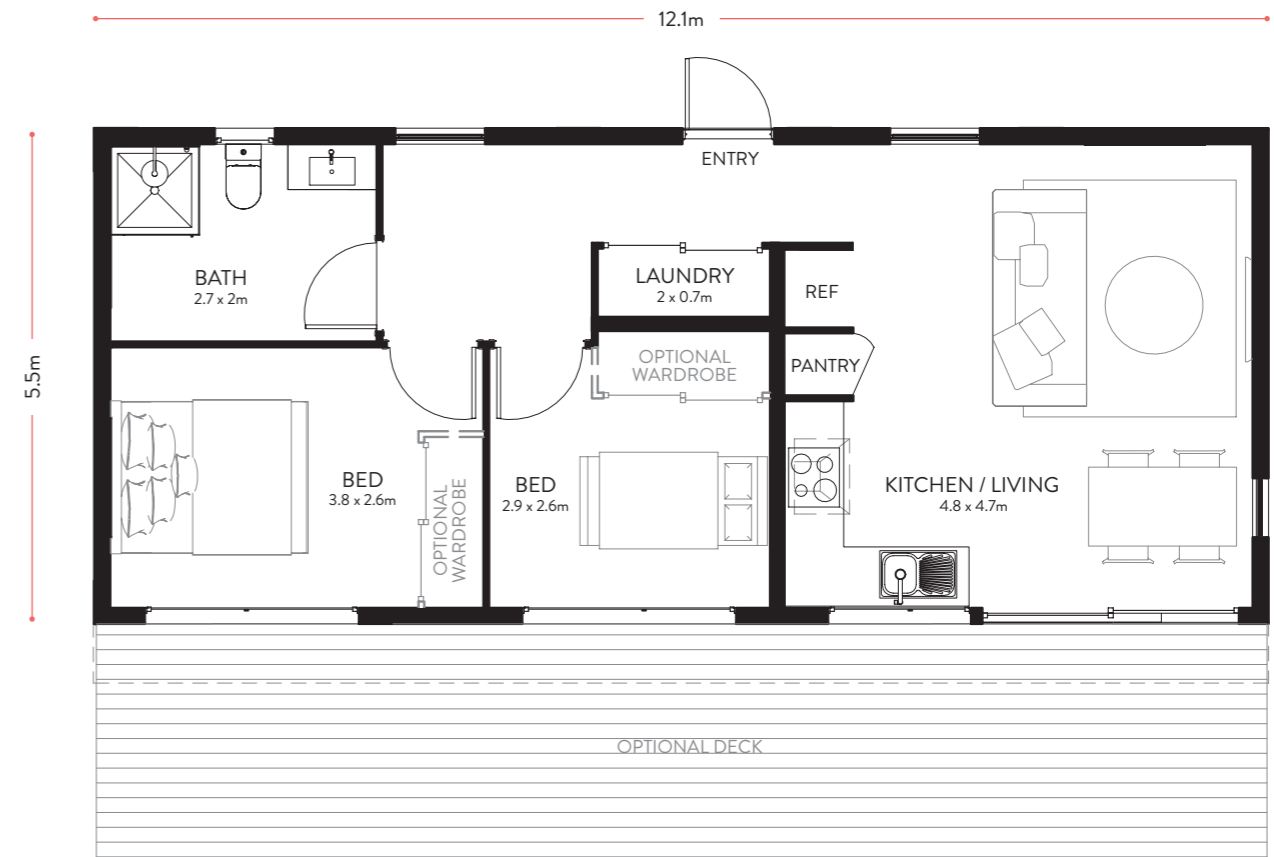
This home is less than 60m² and may receive a planning permit exemption as per the Victorian Government regulations for a secondary dwelling.

<60
square metres

• Find your place

Coolum 10 Floor Plan

Nominal dimensions shown
Loose furniture not included



Coolum 10 Modular Home

from **\$234,700***

- | | |
|------------------------|-----------------|
| Project Management | Fully Assembled |
| Durra Panel | Floor Coverings |
| Bathroom Package | Kitchen Package |
| Laundry Package | Double Glazing |
| Electrical Package | Painting |
| Insulated Floor System | |

Coolum 10 Kit Home

from **\$91,550***

Inclusions listed on page 17

Optional Add Ons

- | | |
|--------------------------|--------|
| • Built in wardrobe (ea) | \$1175 |
| • Deck | POA |
| • Veranda | POA |
| • Upgraded cladding | POA |



* Standard finishes price. All prices quoted are GST inclusive and exclude external consultants, permit fees, delivery to site and site works. Ortech Industries reserve the right to make modifications to the plans, specifications, and dimensions if so required.

Coolum 12

• Find your place



Find all the must have comforts for your new home!

66.7m² studio

- 2 Bedrooms
- 1 Bathroom
- Kitchen
- Lounge
- Study
- Laundry

Coolum 12 Modular Home

from \$253,960*

Coolum 12 Kit Home

from \$96,500*

Inclusions listed on page 17

Optional Add Ons

- Built in wardrobe (ea) \$1200
- Built in desk \$950
- Built in linen cupboard \$1455
- Deck POA
- Veranda POA
- Upgraded cladding POA

Coolum 12 Floor Plan

Nominal dimensions shown
Loose furniture not included



* Standard finishes price. All prices quoted are GST inclusive and exclude external consultants, permit fees, delivery to site and site works. Ortech Industries reserve the right to make modifications to the plans, specifications, and dimensions if so required.

Colum 14



Bring spacious living anywhere with this dynamic home!

83m² studio

- 3 Bedrooms
- 1 Bathroom
- Kitchen
- Lounge
- Laundry

Colum 14 Modular Home

from \$305,200*

- | | |
|------------------------|-----------------|
| Project Management | Fully Assembled |
| Durra Panel | Floor Coverings |
| Bathroom Package | Kitchen Package |
| Laundry Package | Double Glazing |
| Electrical Package | Painting |
| Insulated Floor System | |

Colum 14 Kit Home

from \$106,850*

Inclusions listed on page 17

Optional Add Ons

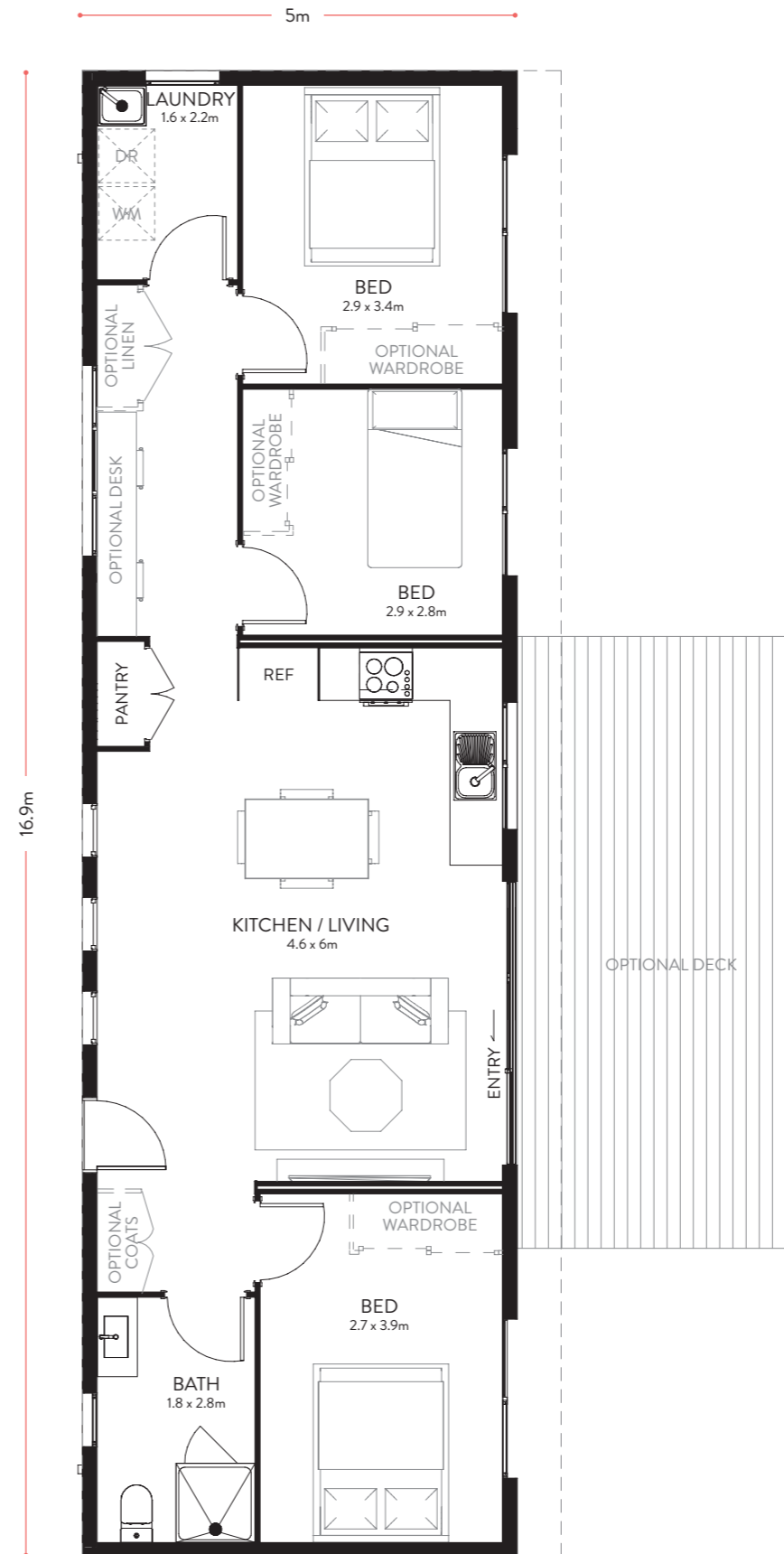
- Built in wardrobe 1&2 (ea) \$1200
- Built in wardrobe 3 \$1840
- Built in desk \$1040
- Built in cupboard (ea) \$1800
- Deck POA
- Veranda POA
- Upgraded cladding POA

* Standard finishes price. All prices quoted are GST inclusive and exclude external consultants, permit fees, delivery to site and site works. Ortech Industries reserve the right to make modifications to the plans, specifications, and dimensions if so required.

• Find your place

Colum 14 Floor Plan

Nominal dimensions shown
Loose furniture not included



Coolum 14



PLACEit Elevate Range

The Elevate Range includes elegantly designed homes that are refined with deluxe finishes, generous inclusions and multiple floorplan options.

Hobby

• Find your place



Crafted with the luxury in mind, with lavish finishes!

24.8m² studio

- 1 bedroom / lounge
- 1 bathroom
- Choice of study, walk in robe, laundry or kitchenette



Hobby Modular Home

 Project Management

 Fully Assembled

 **The Hobby Premium Inclusions**

- Modern façade with two cladding types
- Feature shrouds to windows
- 1600 x 900mm shower
- Upgraded laminate vanity, basin and mirror to bathroom

 Durra Panel

 Floor Coverings

 Bathroom Package

 Double Glazing

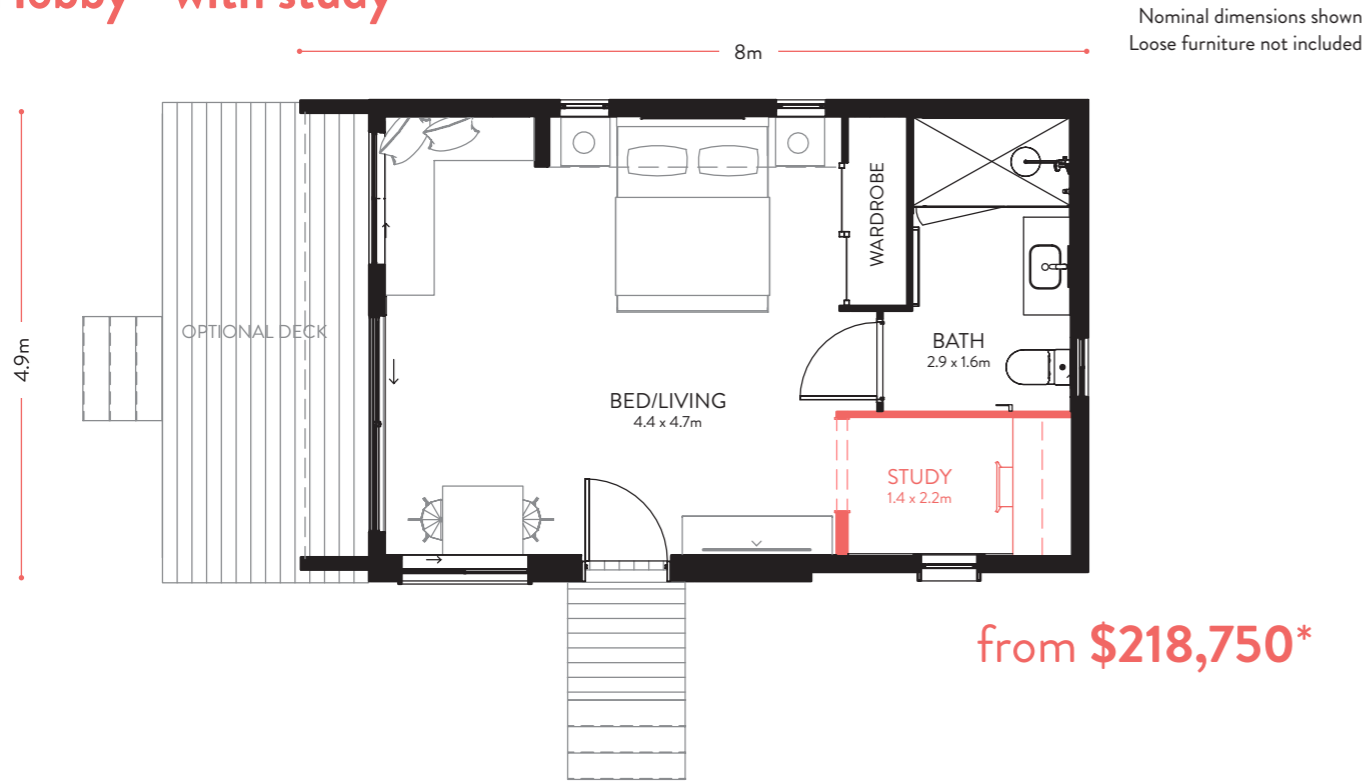
 Electrical Package

 Painting

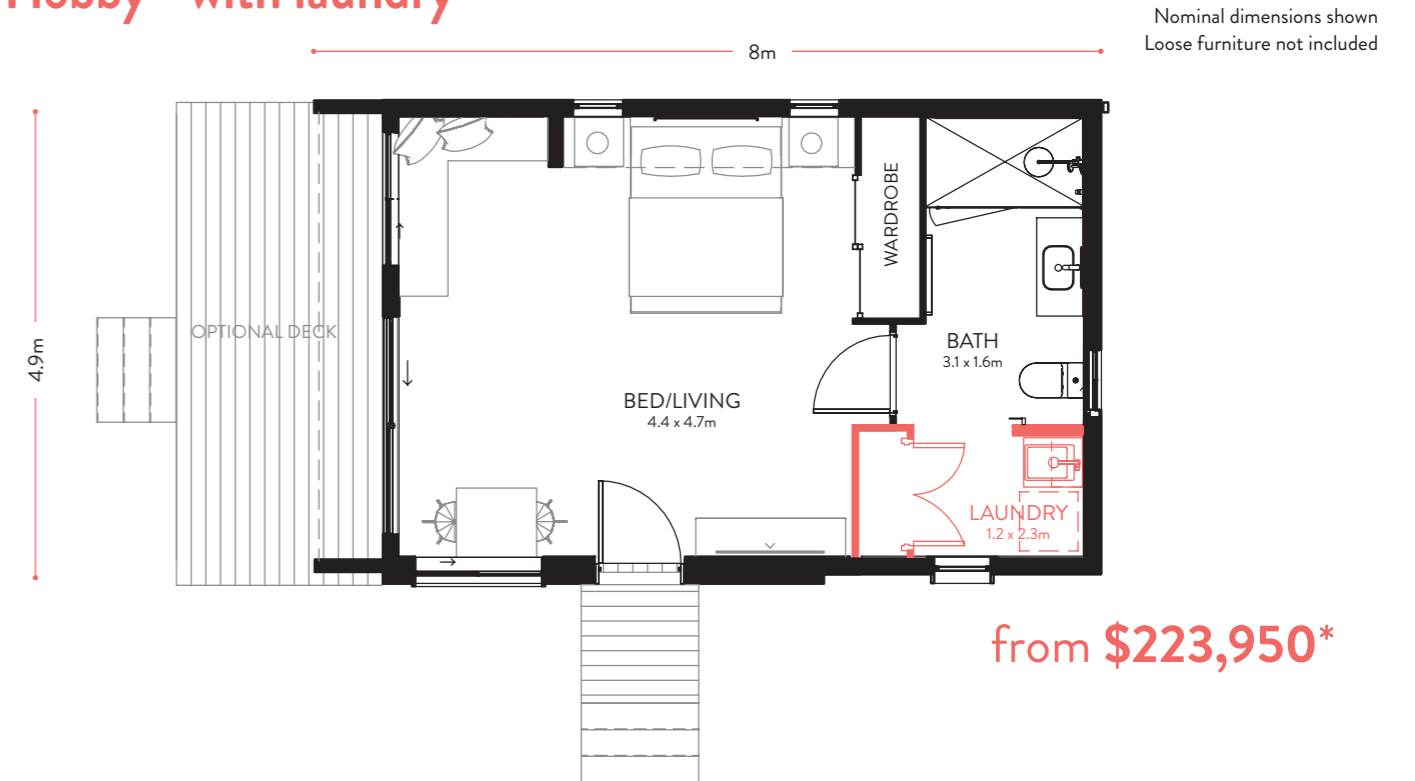
 Insulated Floor System

Some upgraded finishes shown

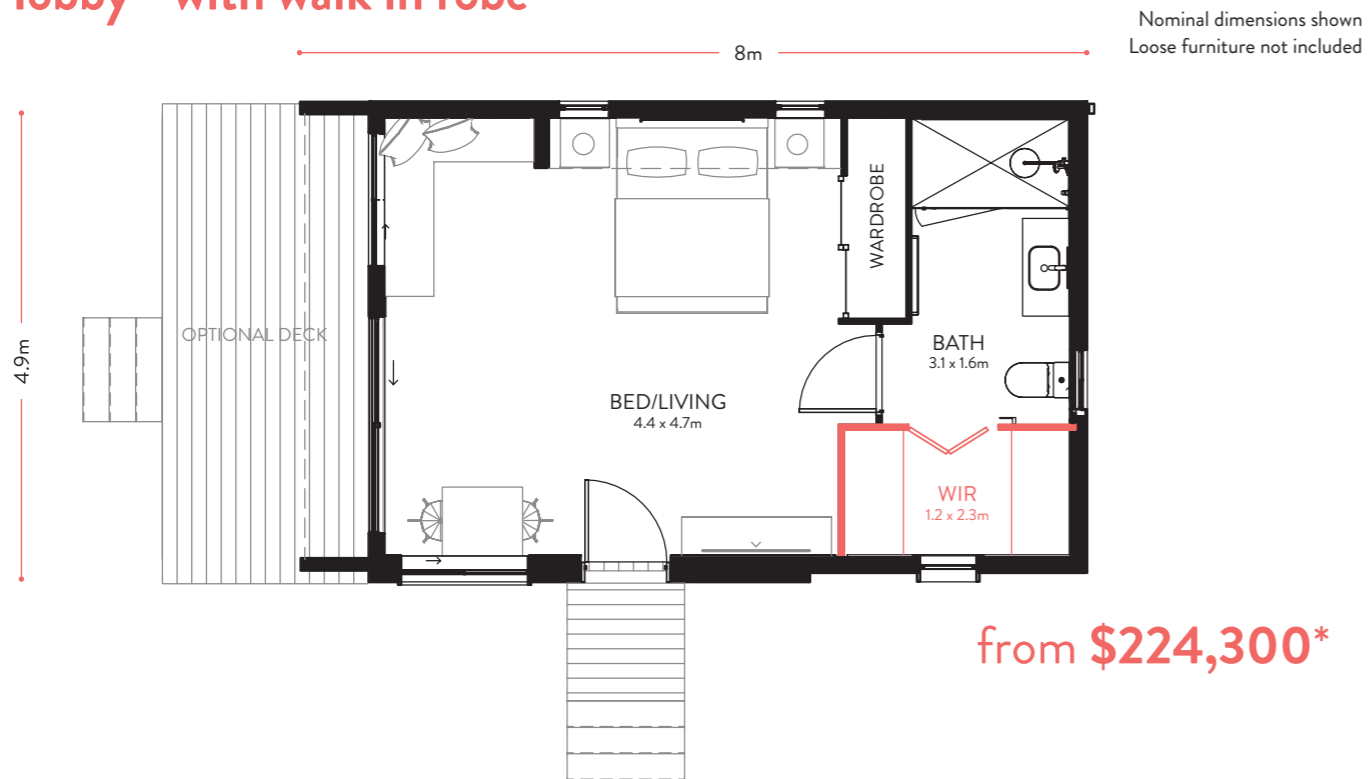
Hobby - with study



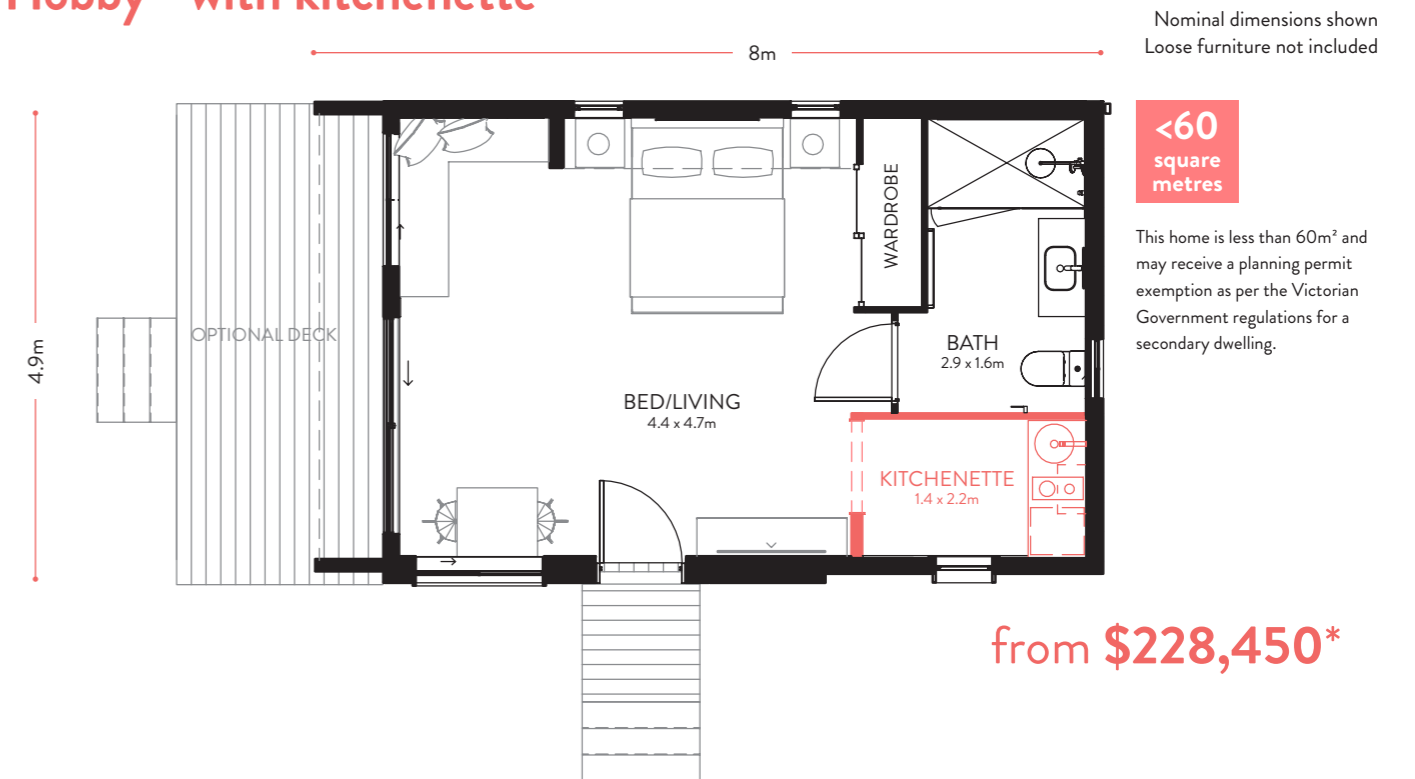
Hobby - with laundry



Hobby - with walk in robe



Hobby - with kitchenette



* Standard finishes price. All prices quoted are GST inclusive and exclude external consultants, permit fees, delivery to site and site works. Ortech Industries reserve the right to make modifications to the plans, specifications, and dimensions if so required.

Hobby Upgrades

• Find your place

Bathroom Upgrade Pack

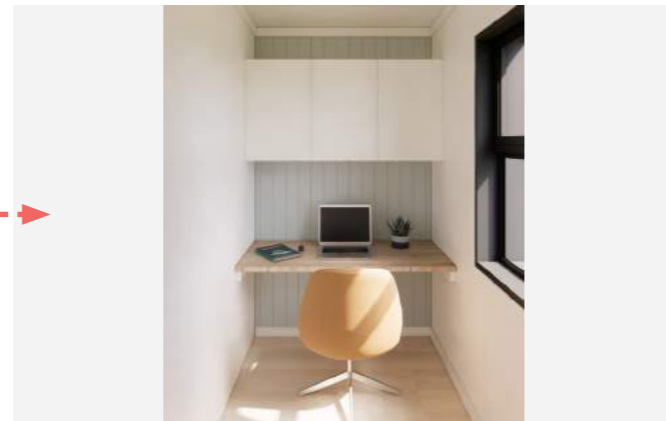
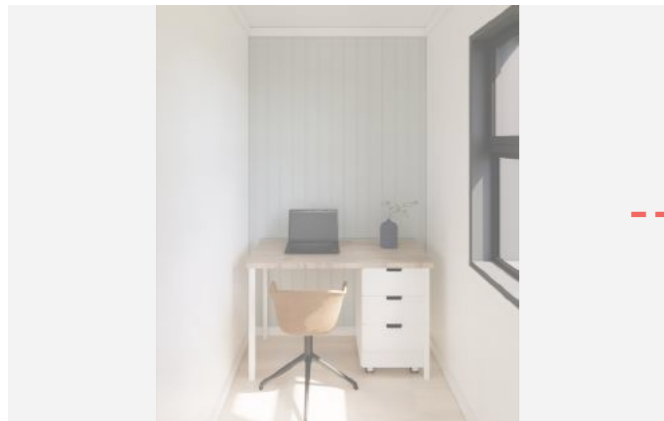


Standard Finishes

Upgraded Finishes
Wall to Floor Tiles to 3 Walls
Timber Vanity and Upgraded Basin
Upgraded Spout and Mixer

from **\$1700**

Study Upgrade Pack



Standard Finishes

Upgraded Finishes
Built-In Study Desk
Overhead Cupboards

from **\$1500**

available add on for Study floorplan

Bedroom / Living Upgrade Pack



Standard Finishes

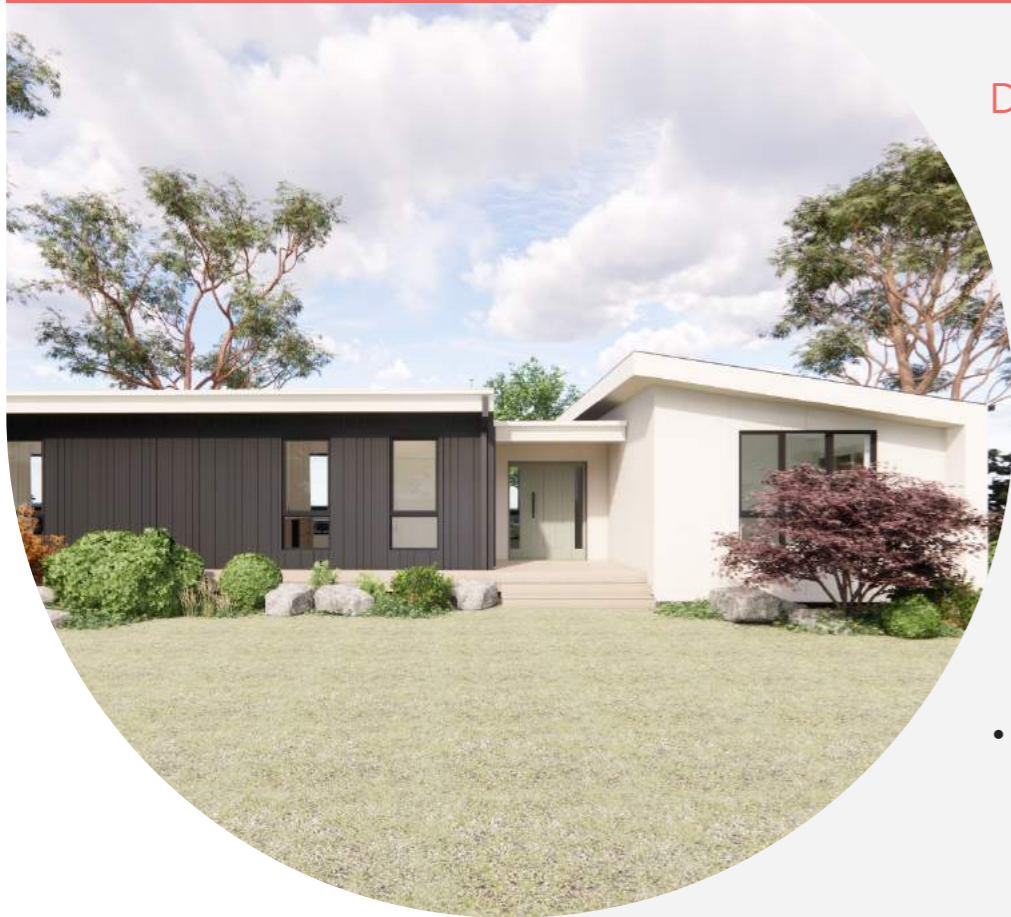
Upgraded Finishes
Bulkhead and Nib Wall Around Bed
Engineered Timber Bulkhead Lining
Engineered Timber Flooring
Engineered Timber Feature Wall
Bench Seat

from **\$11,880**

Deck

A deck can be added to your home design and can be priced based on your location and site conditions.

Escape



Discover the ultimate modular living experience!

130.2m² studio

- 3 Bedrooms
- 2 Bathroom
- Kitchen
- Lounge
- Study
- Laundry

Escape Modular Home from \$442,700*

Project Management

Fully Assembled

Durra Panel

Floor Coverings

Bathroom Package

Kitchen Package

Laundry Package

Double Glazing

Electrical Package

Painting

Insulated Floor System

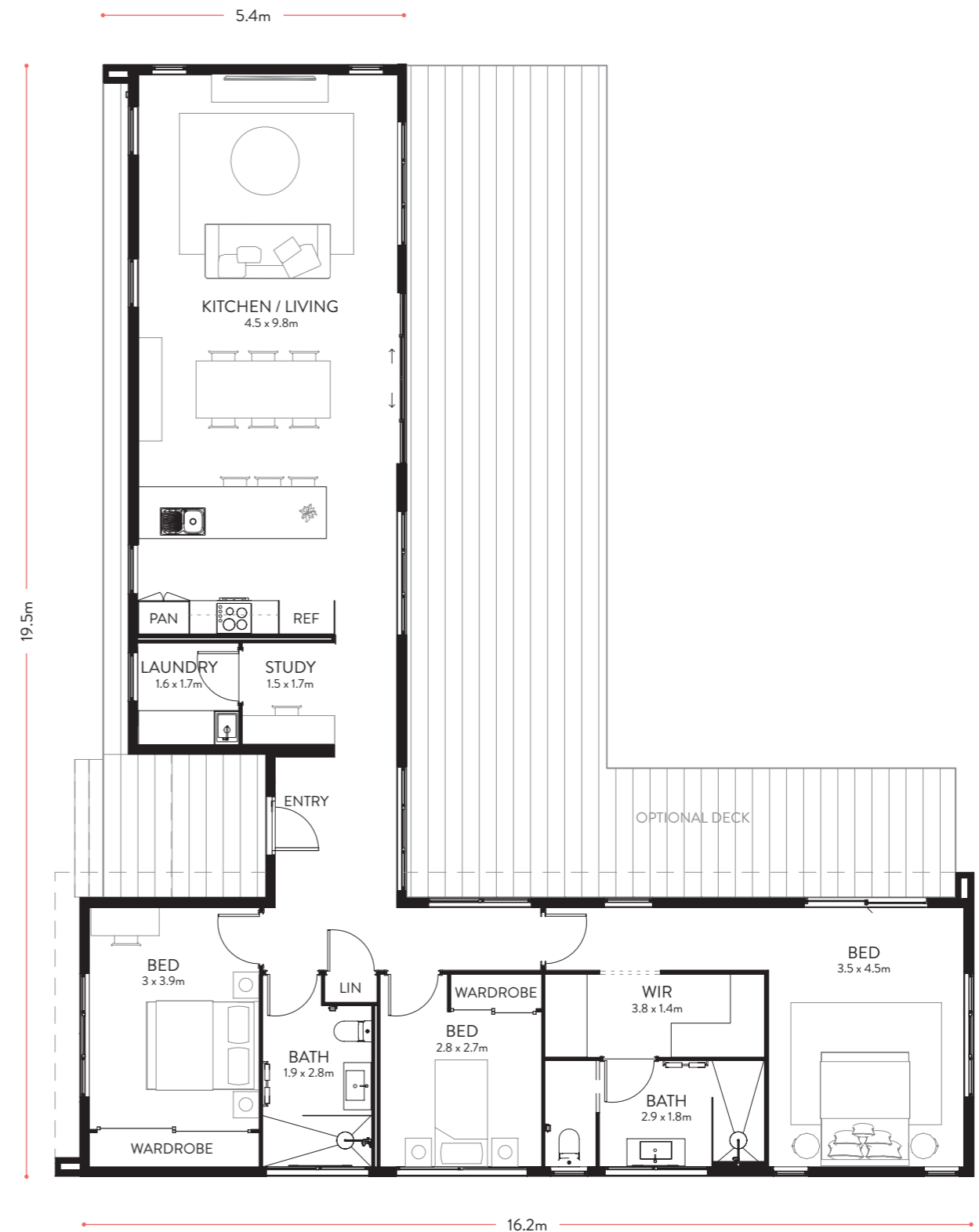
Escape Premium Inclusions

- Modern façade with two cladding types
- Feature entry door and handle
- Upgraded shower screen, shower waste, mirror, vanity, benchtop, basin and tap to bathroom and ensuite
- 1850 x 900mm walk in shower to ensuite.
- Floor to ceiling tiles to 2 walls in ensuite
- Laminate benchtop, lower cabinetry and drop in sink to the laundry
- Walk in wardrobe to master bedroom
- Built in robes to bedrooms

• Find your place

Escape Floor Plan

Nominal dimensions shown
Loose furniture not included



* Standard finishes price. All prices quoted are GST inclusive and exclude external consultants, permit fees, delivery to site and site works. Ortech Industries reserve the right to make modifications to the plans, specifications, and dimensions if so required.

Escape



Some upgraded finishes shown



Escape Upgrades

• Find your place

Kitchen Upgrade Pack



Standard Finishes



Upgraded Finishes

Stone benchtop and undermount sink
Overhead cupboards and timber shelf
Feature stone to wall beside island bench

from **\$9580**

Façade Upgrade Pack



Standard Finishes



Upgraded Finishes

Upgraded cladding to the kitchen/lounge module
Side lights on and upgraded handle on entry door

from **\$3070**

Ensuite Upgrade Pack



Standard Finishes



Upgraded Finishes

Wide 1800mm timber vanity
Double basin and upgraded taps
1800mm wide rectangular mirror

from **\$3440**

Laundry Upgrade Pack



Standard Finishes



Upgraded Finishes

Overhead cupboards and broom cupboard
Stone benchtop

from **\$3120**

Deck

Front porch and / or back deck can be added to your home design and can be priced based on your location and site conditions.



Modern living with a space for everyone to unwind!

137.5m² studio

- 3 Bedrooms
- 2 Bathroom
- Kitchen
- Lounge
- Study
- Laundry

Willow Modular Home

from **\$485,900***

Project Management

Fully Assembled

Durra Panel

Floor Coverings

Bathroom Package

Kitchen Package

Laundry Package

Double Glazing

Electrical Package

Painting

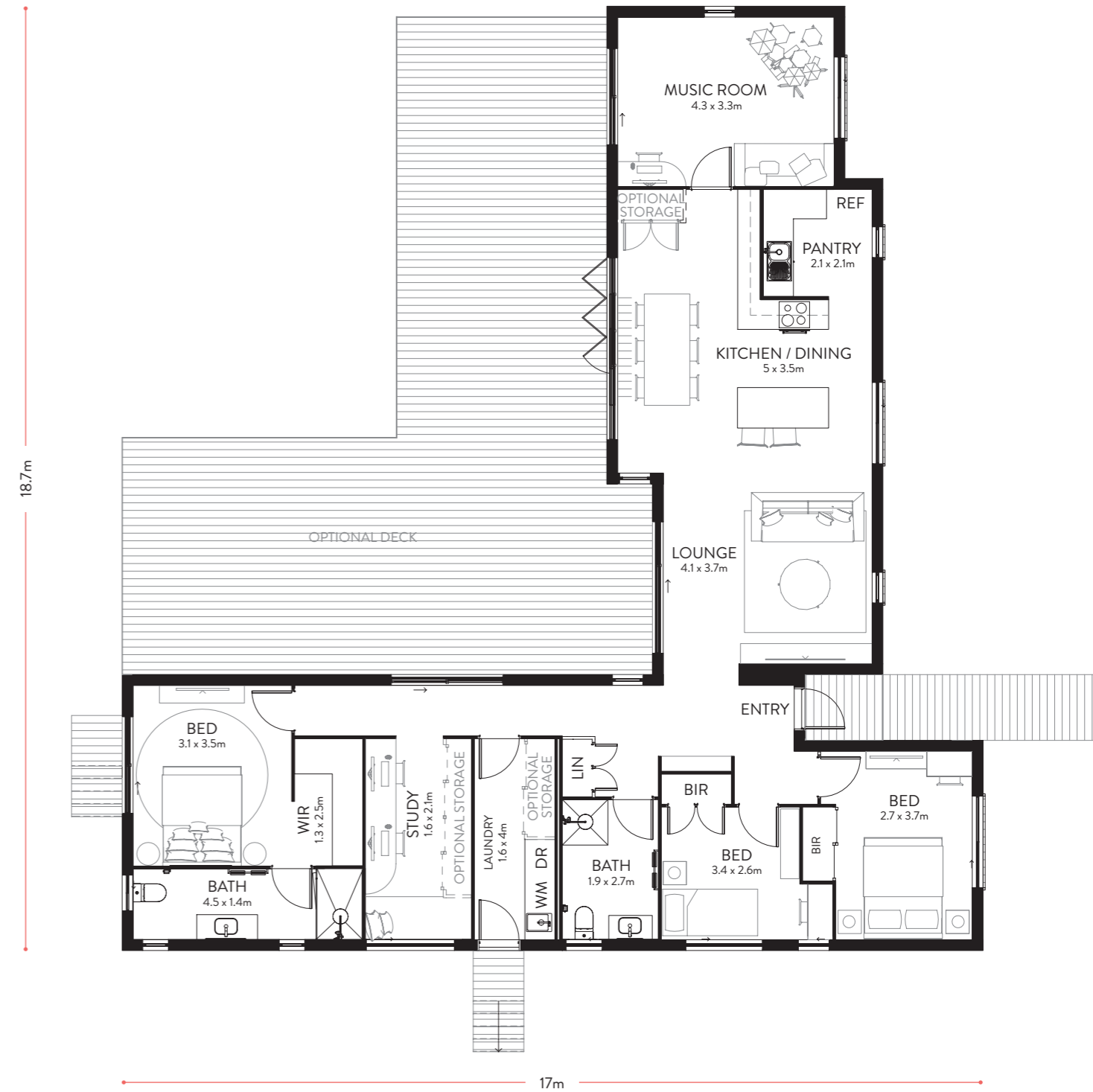
Insulated Floor System

Willow Premium Inclusions

- Modern façade with two cladding types
- Feature entry door and timber window trims
- Timber vanity with stone benchtop and round mirror to bathroom and ensuite
- 1400 x 900mm shower to ensuite
- Floor to ceiling tiles to 3 walls in ensuite and 1 wall in bathroom
- Upper cabinetry, timber shelving to kitchen
- Walk in pantry lower cabinetry, shelves above
- Lower cabinetry and laminate benchtop with drop in sink to laundry
- Bifold doors to dining room
- Built in robes to bedrooms

Willow Floor Plan

Nominal dimensions shown
Loose furniture not included



* Standard finishes price. All prices quoted are GST inclusive and exclude external consultants, permit fees, delivery to site and site works. Ortech Industries reserve the right to make modifications to the plans, specifications, and dimensions if so required.

Willow



Some upgraded finishes shown



Willow Upgrades

• Find your place

Ensuite Upgrade Pack



Standard Finishes



Upgraded Finishes

1800mm Wide Vanity with Stone Benchtop
Double Basin
Double Mirrors

from **\$2150**

Laundry Upgrade Pack



Standard Finishes



Upgraded Finishes

Built-in Storage Cupboard
Overhead Cupboards
Stone Benchtop
Glazed Aluminium External Door
VJ Board Wall Lining

from **\$3640**

Study Upgrade Pack



Standard Finishes



Upgraded Finishes

Bench Seat Under Window
Built-in Storage Cupboard
VJ Board Wall Lining

from **\$4620**

Storage

Built-in Storage Cupboard to Dining Room

from **\$1800**

Deck & Veranda

A deck and / or veranda can be added to your home design and can be priced based on your location and site conditions.

PLACEit

www.placeit.com.au

Ortech Industries Pty Ltd

91 Allingham St
Golden Square VIC 3555

hello@placeit.com.au

P: +61 3 5447 7091



Proudly Australian owned & manufactured



[/PLACEitHomes](https://www.facebook.com/PLACEitHomes)



[/placeit_homes](https://www.instagram.com/placeit_homes)